

ADYASHANTI®



2012 Retreats
with Adyashanti and Mukti

2012 RETREATS

* **Registration by Lottery**

Due to the popularity of Adyashanti's retreats, registration for retreats with this symbol * is by random lottery once per year (see page 17).

◆ **Registration through Host Site**

Retreats with this symbol ◆ indicate that registration is handled by the retreat site on a first-come, first-served basis.

Lottery Application Deadline:

October 7, 2011

* **February 1–10 (9 nights)** page 8

Silent Retreat at Mount Madonna Center
Watsonville, CA

* **April 1–6 (5 nights)** page 10

Silent Retreat at Kanuga Conference Center
Hendersonville, NC

* **May 20–25 (5 nights)** page 12

Silent Retreat at Granlibakken Conference Center
Tahoe City, CA

◆ **July 27–29 (2 nights)** page 21

Hosted by Mount Madonna Center
Watsonville, CA

◆ **September 7–14 (7 nights)** page 22

Hosted by Omega Institute
Rhinebeck, NY

* **November 25–30 (5 nights)** page 14

Silent Retreat at Asilomar
Pacific Grove, CA

Participants understand that all events hosted by Open Gate Sangha will be recorded for use by Open Gate Sangha, Inc. Open Gate Sangha makes no representations or warranties as to any benefit that may be received by attending an event.

© 2011 Open Gate Sangha, Inc. All rights reserved.

CONTENTS

About Retreat

| | |
|----------------------------|---|
| The Mystery of Being | 4 |
| Silence and Inquiry..... | 5 |
| The Retreat Container..... | 5 |
| The Schedule..... | 5 |
| Meditation..... | 6 |
| Retreats on CD..... | 6 |

Retreat Sites (Housing, Costs, Meals, etc.)

| | |
|-------------------------------------|----|
| Mount Madonna Center..... | 8 |
| Kanuga Conference Center..... | 10 |
| Granlibakken Conference Center..... | 12 |
| Asilomar Conference Grounds..... | 14 |

Information & Registration

| | |
|-----------------------------------------------|----|
| Registration by Lottery..... | 17 |
| Attendance Requirements..... | 17 |
| Lottery Results..... | 17 |
| Waiting List..... | 17 |
| Financial Assistance..... | 17 |
| Special Needs..... | 18 |
| Cancellations..... | 19 |
| How to Register | 19 |
| Mail-In Registration Form & Instructions..... | 20 |
| Planning for Retreat..... | 20 |
| Travel Arrangements & Ride Sharing..... | 20 |
| Seating..... | 20 |

Special Retreats

| | |
|-------------------------------------|----|
| Hosted by Mount Madonna Center..... | 21 |
| Hosted by Omega Institute..... | 22 |

Retreats with Mukti

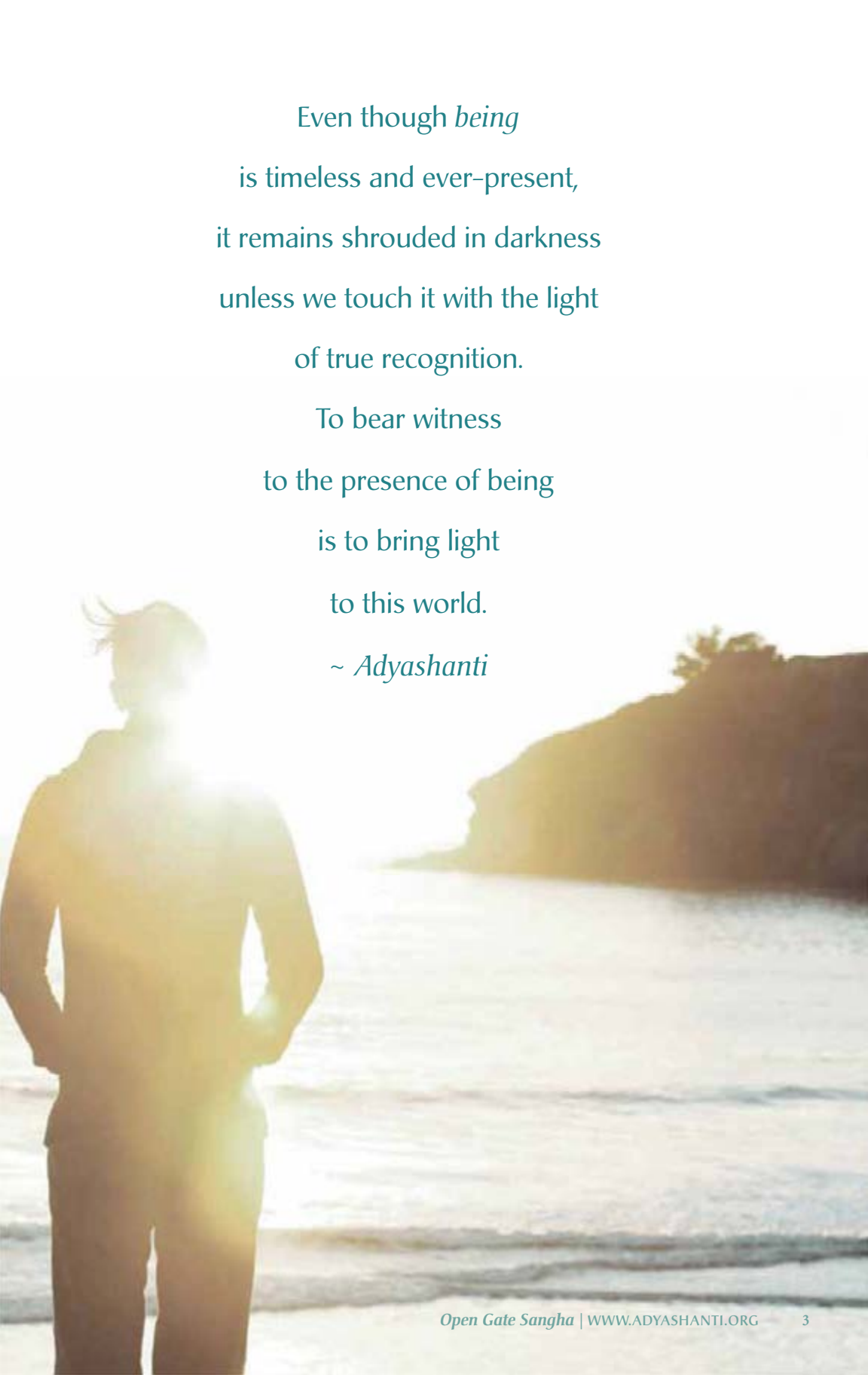
| | |
|------------------------------|----|
| Silent Retreats in 2011..... | 23 |
| Silent Retreats in 2012..... | 23 |

Open Gate Sangha, Inc. is a nonprofit, tax-exempt organization. The office is located in San Jose at 1299 Del Mar Avenue in Suite 200. Please send all mail to:

Open Gate Sangha, PO Box 112107, Campbell, CA 95011.

Photo Courtesies — © BigStockPhoto.com/Elena Ray: cover, page 23. © iStockphoto.com/Chris Gramly: pages 2–3. Andrew Lih: page 4. Diane Kaye: page 5. © BigStockPhoto.com: page 6. Prema Akasha: pages 8–9, 14–15, 21. Mukti: pages 8 (inset), 22 (top), 24. Terri Gray: pages 10–11, 11 (inset). © BigStockPhoto.com/Alex Star: pages 12–13. Granlibakken Conference Center/Vance Fox: page 13 (inset). Steve Kurtz: page 15 (inset). Monique Martineau: pages 17, 18 (top). © iStockphoto.com/Marina Bartel: pages 18–19. © iStockphoto.com/Ino Buratt: page 20. Omega Institute: page 22 (bottom). Adyashanti: page 23 (inset).

“Meditation” poem on page 6: © 2006 by Adyashanti.

A person is standing on a beach, looking out at the ocean. The sun is low on the horizon, creating a bright, hazy glow. The person's silhouette is visible against the bright light. The ocean waves are gently breaking on the shore. In the background, there is a dark, rocky cliffside.

Even though *being*
is timeless and ever-present,
it remains shrouded in darkness
unless we touch it with the light
of true recognition.

To bear witness
to the presence of being
is to bring light
to this world.

~ *Adyashanti*

ABOUT RETREAT

THE MYSTERY OF BEING

BY ADYASHANTI

The central mystery of human existence is the mystery of being. Being is the light and life within us that is shrouded by our denial and confusion. Being is that which disturbs our insistence on remaining in the life-numbing realm of our secret desperation. It is the itch that cannot be scratched, the whisper that will not be

denied. To be, to truly be, is not a given. Jesus said in regard to being, “If you bring forth that which is within you, what you bring forth will save you. If you do not bring forth what is within you, what you do not bring forth will destroy you.” Jesus is saying that the matter of being couldn’t be more serious; it’s about life and death.

Most of us live in a state where our being has long ago been exiled to the shadow realm of our silent anguish. At times being will break through the fabric of our unconsciousness to remind us that we are not living the life we could be living, the life that truly matters. At other times being will recede into the background, silently waiting for our devoted attention. But make no mistake: being—your being—is the central issue of life.

Zen master Bankei referred to being as the Unborn Buddha Mind. The Unborn Buddha Mind is not something other than you; it is not something separate from you. But even though it is not separate from you, you must bring it forth. You must realize it and manifest it—not just once, but moment to moment. This is very important to understand. Being is not something you just realize or awaken to; you must bring it forth as well. You must manifest it. The world is waiting for you—it depends on you bringing forth eternal being into the finite world of space and time.

Even though being is timeless and ever-present, it remains shrouded in darkness unless we touch it with the light of true recognition. To bear witness to the presence of being is to bring light to this world. ▸





► Silence and Inquiry

Retreat is for those who desire to deeply realize the truth of their being and the essence of existence. Retreat offers time to step back from the course of daily life and enter into the Unknown, in an environment that provides both structure and support.

Silence is the container of retreat to which all participants dedicate themselves, for it is in inner silence that deep realization spontaneously blooms.

Retreat is also a time of one-pointed inquiry, a commitment to questioning our most cherished ideas and beliefs. During satsang, I encourage all participants to fearlessly inquire down to the very root of self and the illusion of separation so that the light of awakening can penetrate throughout the whole of one's being.

The entire structure of these retreats is something I've developed over the years to both support the flowering of realization as well as challenge the various ways that we hold on and resist letting go into the truth. Whether you feel drawn to attend retreat or not, I encourage you to enter into the spirit of retreat, into a wholehearted commitment to eternal truth here and now.

► The Retreat Container

A powerful retreat container supports a deep and transformational unfolding into truth. Participants create and nurture this container by observing silence and giving themselves to the schedule and structure of the retreat. Retreats are held in silence, except for our time together in satsang.

Retreatants are asked to come to the retreat prepared to be fully present, with loose ends tied up at work and at home, completing all business before retreat and making arrangements with loved ones to help maintain the silence. This depth of intention allows an undistracted experience of surrender that is not often possible in daily life.

► The Schedule

The schedule offered at Adyashanti's retreats uniquely reflects his sense and experience of what best supports awakening. The deep silence of meditation coupled with the focused inquiry of satsang are the ground and seed from which awakening flowers.

Because the schedule is a vital part of the retreat container, if you cannot arrive on time and plan to stay through the end, Adyashanti requests that you not attend the retreat. This shared commitment supports the group as a whole to experience the depth of retreat.

Day 1: After check-in in the late afternoon, there is a dinner break followed by a retreat orientation and a short talk by Adyashanti.

Daily Activities: Each full day of retreat begins at 7:30 AM and ends at 10:00 PM. Most days include several periods of silent sitting, a guided meditation, 2 sessions with Adyashanti (talks and/or dialogues), and 3 meal breaks.

Last Day: The retreat officially ends just before lunch. (Lunch is provided but attendance is optional.)

If you have medical or psychological pre-existing conditions, you may wish to consult with your doctor or mental health professional before coming on a silent meditation retreat to ensure that the intensity and length of this event are right for you.

Meditation

*All self forgotten,
having no intention of my own,
every breath by the will of God alone.
Suffused in the primordial darkness
uncreated and eternal,
within the mystic void
subtle streams of stillness move.*

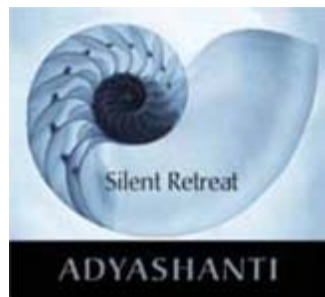
*All striving ceases.
The subtle stream flows unbound
carrying spirit to its source
unseen and unknowable.
The primordial ground awakens within itself
and flows out in infinite expression.*

*The myriad forms cannot help smiling
at such good fortune and grace
as earth and sky reveal
the living body of radiant being.*

*The whole universe
my intimate companion,
shivering in the night chill—
unbound liberation.*

~ Adyashanti

RETREATS ON CD



For those who wish to explore the depths of retreat teachings in private or are unable to attend a retreat in person, audio recordings of Adyashanti's retreats are made available to the public about two months after each retreat.

These limited-edition CD albums include the talks and dialogues recorded live on each retreat with Adyashanti. Each album explores numerous topics unique to the retreat in which it was recorded.

To find the latest retreat CD albums, go to the Bookstore/Audio page at www.adyashanti.org. The current albums, if available, will appear on or near the top of the list.

Guided Meditations

Guided Meditations are available to download about one month after each retreat. Visit the Audio Library at www.adyashanti.org/cafedharma and search for "meditations" to find the complete selection.



RETREAT SITES

“The Unborn Buddha Mind is not something other than you; it is not something separate from you. But even though it is not separate from you, you must bring it forth. You must realize it and manifest it—not just once, but moment to moment.”



RETREAT AT MOUNT MADONNA

9-Night Retreat in the Santa Cruz Mountains February 1–10, 2012

Overlooking the Monterey Bay in California, Mount Madonna Center offers a peaceful mountain setting with 355 acres of redwood forest and grassland.

www.mountmadonna.org



► Accommodations

The accommodations at Mount Madonna vary from rustic to modern. Buildings are wheelchair-accessible; please mention special needs to the Mount Madonna Center staff when reserving your housing.

► Meals

The cost includes three vegetarian meals per day, starting with dinner on the first day and ending with lunch on the last day. Gluten-free and non-dairy options are available at each meal. Tea and fruit are available at all times. Special allergy or medical diets should be discussed with Mount Madonna Center staff when you reserve your housing. Mount Madonna requests that you do not bring food.

► Retreat Costs

Total Cost = Event Fee + Housing Fee

Event Fee, payable to Open Gate Sangha: \$675 per person.

Housing Fee, per person, payable to Mount Madonna Center:

| | |
|--------------------------------------|---------|
| Van or Tent Camping | \$599 |
| Economy Dorm | \$788 |
| Dorm (4–7 people) | \$833 |
| Triple | \$923 |
| Double | \$1,031 |
| Double w/bath (limited) | \$1,139 |

There is no “commuter” option. Tent campers be forewarned: there may be heavy rains during retreats in October through March. *Housing costs and availability of housing types are not guaranteed.*

► Mount Madonna Center Housing Cancellation Policy

Upon acceptance into a retreat, you must reserve your housing no later than 30 days prior to the retreat.

- Cancel 31 days or more before the retreat:
\$50 cancellation fee
- Cancel 30 days or less before the retreat:
No refund of housing fee



RETREAT AT KANUGA

5-Night Retreat in the Blue Ridge Mountains

April 1–6, 2012

Thirty minutes from Asheville, NC, Kanuga Conference Center is located on 1,400 wooded acres in the Blue Ridge Mountains with scenic Kanuga Lake at its center.

www.kanuga.org



Accommodations

Housing options range from lodge-style rooms with private baths to comfortably rustic historic cottages with private and shared baths, living rooms, and porches. The main meeting room and a limited number of bedrooms are wheelchair accessible; please mention special needs to the Kanuga staff when you reserve your housing.

Meals

The cost includes three meals per day, starting with dinner on the first day and ending with lunch on the last day. Vegetarian diets may be requested on the housing application form, which will be sent to you with the attendance confirmation. Allergy or medical diets must be requested prior to your arrival. Tea and coffee are available at all times.

Retreat Costs

Total Cost = Event Fee + Housing Fee

Event Fee, payable to Open Gate Sangha: \$400 per person.

Housing Fee, per person, payable to Kanuga:

- Doubles**.....\$523
- Singles (limited)**.....\$684

There are no “commuter” or camping options. *Housing costs and availability of housing types are not guaranteed.*

Kanuga Housing Cancellation Policy

Upon acceptance into a retreat, you must reserve your housing with a nonrefundable deposit of \$100. Full housing payment is due 30 days prior to the start of retreat.

- Cancel before the retreat start date:
\$100 cancellation fee (nonrefundable deposit)
- Cancel on or after the retreat start date:
No refund of housing fee



RETREAT AT GRANLIBAKKEN

5-Night Retreat at Lake Tahoe

May 20–25, 2012

Nestled among the pine trees on 74 secluded acres above Lake Tahoe in Northern California, Granlibakken Conference Center offers comfortable accommodations within tranquil and peaceful surroundings.

www.granlibakken.com

Accommodations

Lodging options include bedrooms, studios, suites, and town houses, each with a private bath and shared living area. Dorm rooms with bunk beds and shared bath are also available. Please mention any physical limitations or special needs to the Granlibakken staff when reserving your housing.

Meals

The cost includes three meals per day, starting with dinner on the first day and ending with lunch on the last day. Special allergy or medical diets should be discussed with Granlibakken staff when you reserve your housing.

Retreat Costs

Total Cost = Event Fee + Housing Fee

Event Fee, payable to Open Gate Sangha: \$400 per person.

Housing Fee, per person, payable to Granlibakken:

Dorm/Bunk Room (4–12 people) \$474

Pavilion Bunk Room (3–8 people)..... \$534

Doubles..... \$744–\$858

Singles..... \$984–\$1,188

There are no “commuter” or camping options. *Housing costs and availability of housing types are not guaranteed.*

Granlibakken Housing Cancellation Policy

Upon acceptance into a retreat, you must reserve your housing at Granlibakken with a deposit of \$100. Full housing payment is due 30 days prior to the start of the retreat.

- Cancel 31 days or more before the retreat: \$20 cancellation fee
- Cancel 30 days or less before the retreat: \$100 cancellation fee
- Cancel on or after the retreat start date: Two nights lodging charged



RETREAT AT ASILOMAR

5-Night Retreat on the California Coast

November 25–30, 2012

Asilomar Conference Grounds, located on the shoreline of California's Monterey Peninsula, is rich with history and scenic beauty. Its tranquil setting includes 107 acres of dunes, beach, and forest.

www.visitasilomar.com



► Accommodations

The rooms at Asilomar are very comfortable, and each includes a private bathroom. The main meeting room and some residential halls are wheelchair-accessible; please mention special needs to the Asilomar staff when you reserve your housing. Asilomar does not have camping facilities.

► Meals

The cost includes three meals per day, starting with dinner on the first day and ending with lunch on the last day. Vegetarian diets may be requested on the housing application form, which will be sent to you with the attendance confirmation. Allergy or medical diets must be requested prior to your arrival. Asilomar requests that you do not bring food.

► Retreat Costs

Total Cost = Event Fee + Housing Fee

Event Fee, payable to Open Gate Sangha: \$375 per person.

Housing Fee, per person, payable to Asilomar:

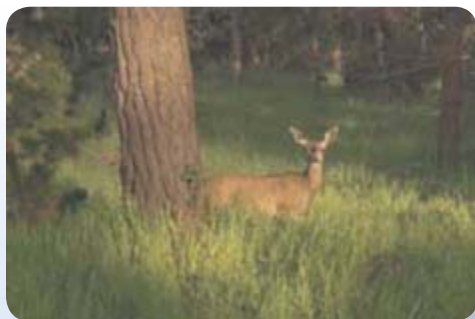
| | |
|--------------------------------|-------|
| Triples/Quads (limited) | \$474 |
| Doubles | \$617 |
| Singles (limited) | \$964 |

There is no “commuter” option. *Housing costs and availability of housing types are not guaranteed.*

► Asilomar Housing Cancellation Policy

Upon acceptance into a retreat, you must reserve your housing no later than 60 days prior to the retreat.

- Cancel 61 days or more before the retreat: \$50 cancellation fee
- Cancel 60 days or less before the retreat: **No refund of housing fee**



INFORMATION & REGISTRATION

Attending a retreat can be a profoundly liberating event that both nurtures and challenges participants to dive deeply into themselves. Signing up for a retreat can be a big decision, and many find that the retreat experience begins the moment they submit their registration. The following pages will answer most of your questions about travel, special needs, scholarships, and how to register.



Lottery Deadline: October 7, 2011

Registration by Lottery

Due to the popularity of Adyashanti's retreats, Open Gate Sangha processes retreat registrations once per year through a random lottery system and cannot offer a spot to everyone who wishes to attend. All retreat registrations submitted before the lottery deadline are considered equally—**there are no special considerations.**

We recommend that you **only register for the retreats you want to attend.** You will be charged for each retreat you are accepted into, subject to the cancellation policy on page 19.



Attendance Requirements

To attend a retreat with Adyashanti, you will be required to:

1. Pay the event fee to Open Gate Sangha.
2. Pay for housing with the retreat site. See costs on pages 9, 11, 13, and 15.
3. Arrive on time (check in before dinner on the first day of the retreat) and stay at the retreat site through the end of the retreat (just before lunch on the last day).

If you are accepted into a retreat—Your payment will be processed, and you will receive a registration confirmation letter and a housing application by the end of October. Please do not contact the retreat site until you have received your confirmation and housing application. You will need to pay for your housing by the deadline noted on your confirmation letter.

If you are not accepted into a retreat—Your payment will not be processed, and you will automatically be placed on a waiting list for your chosen retreat. You will receive a waiting list notification by the end of October.

Lottery Results

Lottery results will be sent via email and/or postal mail 2–3 weeks after the deadline. At that time, you can access lottery results by logging into your member area at www.adyashanti.org. If you have not received a confirmation email after two weeks, please check your junk mail and spam folders; the email may have been blocked.

Waiting List

If you miss the retreat registration deadline, or if a retreat has filled, you can place your name on the waiting list at www.adyashanti.org two weeks after the lottery deadline. You will then be on standby to attend the retreat if a participant cancels, and Open Gate Sangha will contact you to see if you still wish to attend.

Important to know:

1. We cannot guarantee if or when you might be called to attend retreat.
2. We will not be able to tell you your status on the waiting list.
3. You and a partner can both get on the waiting list, but not as a couple. Participants are called from the waiting list one at a time.
4. If you choose to attend the retreat, you must accept whatever housing is available.
5. Financial assistance is not available for people called from the waiting list.

Financial Assistance

Open Gate Sangha offers scholarships to retreats for those who need financial assistance. Scholarships are awarded based on a number of criteria, including availability of scholarship funds, applicant's financial need, and prior scholarships awarded to the applicant. We offer a limited number of scholarships and cannot guarantee an award to any individual.

Scholarship Options

There are two kinds of scholarships for retreats: A **Partial Scholarship** is an award equal to the event fee. Partial Scholarship recipients are responsible for reserving and paying for their housing with the retreat site. A **Full Scholarship** is an award equal to the event fee plus the least expensive



indoor housing fee. If Full Scholarship recipients require rooms of greater cost, they are responsible for paying the difference.

Applying for a Scholarship

If you choose to apply for a scholarship, do not register for the retreat lottery.

Complete details about scholarships, scholarship housing, and how to apply for a scholarship are found on the Retreat Scholarship Application form. Download it from the Events/Retreats area at www.adyashanti.org or request that a copy be sent to you.

The scholarship application deadline for all retreats in 2012 is October 7, 2011. If you miss this deadline, please wait and apply for a scholarship when retreats in 2013 are announced.

Donating to the Scholarship Fund

Many thanks to those who have contributed to Open Gate Sangha's Scholarship Fund. This support helps make it possible for many to attend retreats and intensives who otherwise would not be able to afford it.

To contribute to the Scholarship Fund, mail a check to the following address: **Open Gate Sangha, P.O. Box 112107, Campbell, CA 95011.**

Be sure to specify "Scholarship Fund" on your check. Open Gate Sangha, Inc. is a nonprofit, tax-exempt organization.

“Make no mistake: being—your being—is the central issue of life.”

Special Needs

For those who have special needs, the following information may be helpful when planning for a retreat:

- ▶ All retreat sites have some wheelchair-accessible housing options, and retreat meeting halls and dining buildings are wheelchair-accessible.
- ▶ All retreat sites have some accommodations that require using stairs or walking long distances, and not all paths are lit at night.
- ▶ Asilomar's jitney cart service is available for transporting special-needs guests onsite.
- ▶ Mount Madonna Center's tent camping and some cabins require walking up a hill and through a wooded area.

Although the retreat sites will make every reasonable effort to find the right accommodation for your needs, all housing for these events is "first come, first served." For this reason, we cannot guarantee that your specific requests will be met.

The structure of the retreat itself can be rigorous. Most days include several meditation sessions up to 40 minutes each, a 1-hour talk, and a 2-hour satsang.

If you need special assistance in order to be on retreat, please make all arrangements prior to arriving at the retreat. If it is not possible for you to participate within this format, we recommend attending a 1- or 2-day intensive instead. The schedule for intensives is less rigorous and does not require participants to maintain silence throughout the event.

For those who would like to experience the depth of retreat teachings but are unable to attend a retreat in person, we recommend Adyashanti's retreat CD albums. See page 6.



► Cancellations

Cancellation Procedure

1. Notify Open Gate Sangha.
2. Notify retreat site.

Cancellation Policy

Event Fee Cancellation Policy

(*Open Gate Sangha*)

31 days or more before the retreat:

\$50 cancellation fee

30 days or less before the retreat:

No refund of Event Fee

Housing Fee Cancellation Policies

(*Retreat Sites*)

Housing cancellation policies are specific to each retreat site. See pages 9, 11, 13, and 15.

Important: If you are accepted to go on retreat through the lottery, and the retreat site does not receive your housing fee payment by the deadline indicated in your confirmation letter, Open Gate Sangha reserves the right to cancel your retreat attendance and refund your event fee, minus a \$50 cancellation fee. Please notify Open Gate Sangha immediately if you need to cancel.



► How to Register

Option 1

Register ONLINE at www.adyashanti.org

Submit your registration by midnight, **October 7, 2011**.

Go to the Events/Retreats page to find the retreat you wish to attend. Credit cards are accepted online.

Online Registration Tips for Couples:

Here are a few helpful tips for those who wish to attend a retreat with a partner:

1. Before you begin the online registration process, make sure your partner is registered as a member at www.adyashanti.org with his or her own email address.
2. If your partner does not have his or her own email address, please submit your registration by mail.
3. You and your partner will be sent separate waiting list and/or registration confirmations by email and postal mail 2–3 weeks after the lottery deadline.

Option 2

Register by Mail

Postmarked by **October 7, 2011**.

Send payment by check or money order only; credit cards are not accepted for mail-in registrations.

Individuals:

1. Use ONE form (on page 20) for all retreat requests.
2. For each retreat you wish to attend, write a separate check, payable to *Open Gate Sangha*.
3. Your check will be processed only if you get into a retreat.

Partners:

For two people who wish to attend a retreat together and do NOT wish to attend separately:

1. Use ONE form for all retreat requests.
2. Print BOTH participants' names and complete contact information on the same form.
3. For each retreat you wish to attend together, include a separate check for two times the event fee. Make check payable to *Open Gate Sangha*.

Mail-In Registration Form

Postmark Deadline: **October 7, 2011**

Please read the cancellation policy on page 19 and register only for the retreats you wish to attend. You will be charged for each retreat you get into, subject to the cancellation policy.

Please read instructions on reverse and print legibly.

Name: _____ Male Female

Address: _____

City/State/Zip: _____

Home Phone: _____

Work Phone: _____

Cell Phone: _____

Email: _____

This is a new/updated address, phone number, or email.

Partner Name: _____ Male Female

Partner Address: _____

City/State/Zip: _____

Partner Home Phone: _____

Partner Work Phone: _____

Partner Cell Phone: _____

Partner Email: _____

This is a new/updated address, phone number, or email.

► 2012 Event Fee Payments

Event fees are per person per retreat, payable to *Open Gate Sangha*. Include a **separate check** for each retreat. Sorry, no credit cards.

Feb. 1–10 / Mt. Madonna \$675 Check# _____ \$ _____

Apr. 1–6 / Kanuga \$400 Check# _____ \$ _____

May 20–25 / Granlibakken \$400 Check# _____ \$ _____

Nov. 25–30 / Asilomar \$375 Check# _____ \$ _____

Mail to: Open Gate Sangha

PO Box 112107, Campbell, CA 95011-2107 USA

Lottery results will be mailed 2–3 weeks after the deadline.

► Housing Fee Payment

Housing fees will be payable to the retreat site if and when you are registered into a retreat.

► Planning for Retreat

Travel Arrangements

Once you have received a retreat attendance confirmation, you can begin planning your trip. If you are traveling by air, we recommend flying in before 1:30 PM on the first day of the retreat, and flying out after 4 PM on the last day of retreat. Information regarding airports, shuttles, and driving directions will be available online after your registration is confirmed.

Ride Sharing

For those who would like to offer or share a ride to retreat, a ride-share message board is available if you sign up at www.rideshare.adyashanti.org.



Seating

The retreat centers will provide prearranged seating for silent sitting and satsang. Feel free to bring extra cushions or back supports. Do not bring your own chairs or backjacks to Mount Madonna or Asilomar. You may bring backjacks or cushions for floor seating at Kanuga and Granlibakken.

Staying Extra Nights

If you wish to stay at the retreat site before or after the retreat, contact the retreat site directly, after you have received your retreat confirmation and housing application.

SPECIAL RETREATS

Special Retreats are hosted by the retreat sites who handle both event registration and housing arrangements. These retreats are held in silence and follow the same structure and activities as those hosted by Open Gate Sangha.



Hosted by Mount Madonna Center in Watsonville, CA

July 27–29, 2012 ~ 2-Night Retreat

- ▶ **Register through Mount Madonna Center.**
- ▶ **No lottery required!**

Mount Madonna Center is sponsoring a special weekend retreat with Adyashanti. The retreat will be held in silence, similar to Adyashanti's Open Gate Sangha retreats, with the schedule modified to create a powerful 2-night format. The weekend will include several silent sittings and five satsangs.

▶ **Cost**

Mount Madonna Tuition: \$260

Mount Madonna Accommodations: From \$70 (com-muter) to \$210 per person (double with bath).

▶ **To Register**

All registration and housing arrangements will be handled by Mount Madonna Center starting January 1, 2012. Registration is not available through Open Gate Sangha.

Mount Madonna Center will be accepting registrations on a first-come, first-served basis through their website, www.mountmadonna.org, starting January 1, 2012.

www.mountmadonna.org



Hosted by Omega Institute in Rhinebeck, NY

September 7–14, 2012 ~ 7-Night Retreat

▶ Register through Omega Institute starting October 2011.

▶ No lottery required!

Omega Institute is sponsoring a 7-night silent retreat with Adyashanti. The structure and daily schedule of this retreat will be just like Adyashanti's Open Gate Sangha retreats, where participants share in a deep commitment to the container of silence.



▶ Cost

Omega 7-Night Tuition: \$515

Omega 7-Night Accommodations: Estimated cost from \$483 for camping to \$1,673 for a single.

*Accommodation pricing is estimated at the time of this printing and is subject to change. Check www.eomega.org in October 2011 to verify pricing.

▶ To Register

All registration and housing arrangements will be handled by Omega Institute. Registration is not available through Open Gate Sangha.

Omega Institute will be accepting registrations online or by phone on a first-come, first-served basis starting in October 2011. Call (800) 944-1001 within the US, or (845) 266-4444 outside the US. For more information or to register, visit www.eomega.org. Omega Institute is offering a limited number of scholarships for this event.

www.eomega.org



RETREATS WITH MUKTI

Retreats with Mukti offer much the same structure and teaching principles as those with Adyashanti, while also offering intimate venues with fewer participants. In these smaller retreats, daily yoga or qi gong movement complement the periods of silent sitting. In her own teaching, Mukti brings flavors of feminine quietude and nurturing as well as kinesthetic, visual, and precise pointers to Truth.

All of Mukti's retreats are registered on a first-come, first-served basis. For details and registration, visit the website listed under each retreat.



MUKTI

Mukti is the Associate Teacher of Open Gate Sangha. You can learn more about her and her teachings at www.muktisource.org.

SILENT RETREATS IN 2011

5-Night Retreat at Vajrapani

November 1–6, 2011 in Boulder Creek, CA

Details at www.muktisource.org

Total Cost \$625–\$1000

2-Night Retreat at Mount Madonna

December 2–4, 2011 in Watsonville, CA

Details at www.mountmadonna.org

Total Cost \$311–\$521

SILENT RETREATS IN 2012

7-Night Retreat at Vajrapani

March 23–30, 2012 in Boulder Creek, CA

Details at www.muktisource.org

Total Cost* \$853–\$1299

2-Night Retreat at Garrison

May 4–6, 2012 in Garrison, NY

Details at www.muktisource.org

Total Cost* \$435–\$495

4-Night Retreat at Hollyhock

June 20–24, 2012 in Cortes Island, BC

Details at www.hollyhock.ca

Total Cost* \$827–\$1627 CDN

2-Night Retreat at Mount Madonna

September 14–16, 2012 in Watsonville, CA

Details at www.mountmadonna.org

Total Cost* \$330–\$552

2-Night Special Retreat at Kripalu

October 12–14, 2012 in Lenox, MA

Details at www.kripalu.org

Total Cost* \$435–\$965

* Costs are estimated at the time of this printing and are subject to change.





Open Gate Sangha
Post Office Box 112107
Campbell, California 95011-2107
(408) 299-0201
www.adyashanti.org

2012 RETREATS

Adyashanti's retreats are announced once per year. This brochure contains information and registration details for all of Adyashanti's retreats in 2012 and highlights of Mukti's retreats in 2011–2012.

Adyashanti, author of *Falling into Grace*, *True Meditation*, and *The End of Your World*, is an American-born spiritual teacher devoted to serving the awakening of all beings. His teachings are an open invitation to stop, inquire, and recognize what is true and liberating at the core of all existence.



The Open Gate Sangha organization supports the teachings of Adyashanti and Mukti by making them available to all who sincerely yearn for peace and freedom. Founded in 1996, the organization is run by a small staff and many dedicated volunteers.

Nonprofit Org
U.S. Postage
Paid
Campbell, CA
Permit No. 1041